



# Buckeye Local School District

Virtual Facilities Committee Meeting 10

Issued April 5, 2020



# Agenda

Updates

Master Plan Option Review  
- Segmenting

Schedule/Next steps

Questions



## UPDATES SINCE LAST MEETING

- OFCC postponed update to Annual Cost update due to unknown implications to economy due to COVID-19
- Recommendations from our OFCC planner are to assume 15% increase for 2020
- Previous plans presented showed 10% increase – Costs have been updated to 15%
- Each plan has been further vetted out and detailed including cost impacts

# Agenda

Updates

Master Plan Option Review  
- Segmenting

Schedule/Next steps

Questions

# BRADEN SITE (28 Acres) – NEW PK-12

## **Full Scope:**

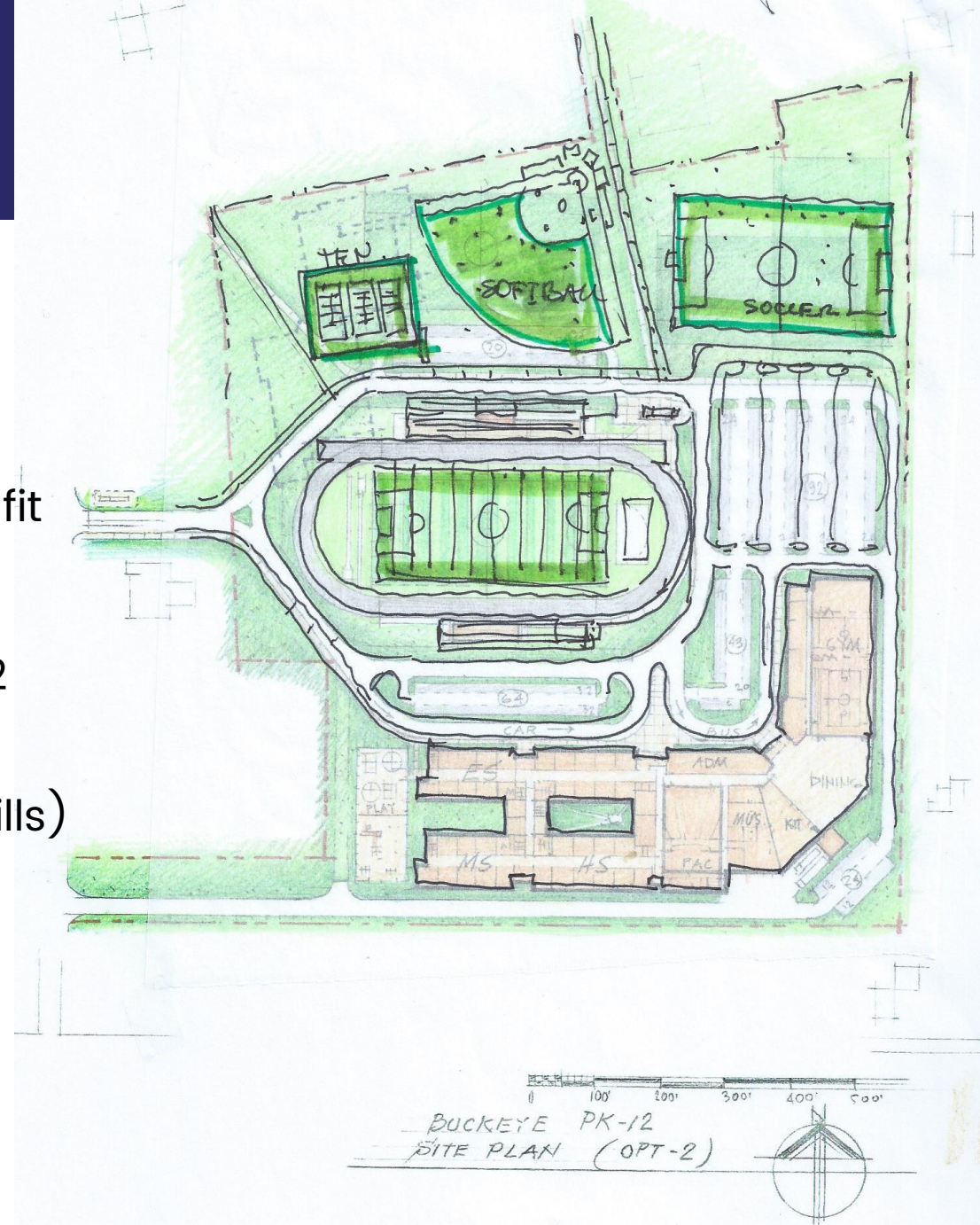
- Build New PK-12 at Braden Site
- Abate/Demo all existing school buildings
- Construct New Stadium, BOE, New 750 Seat Auditorium, Relocation of ballfields & tennis (note: Baseball will not fit at this site)

**Total Cost if implemented all scope in 2020:** \$86,149,992

Bond Issue under ELPP = \$86,149,992

Cost to Homeowner per month\* = \$49.52/month (16.94 mills)

Future Potential ELPP Credit = \$44,182,892



\*For home of \$100,000

# BRADEN SITE – SEGMENTED PK-12 SEGMENT 1

## Segment 1 Scope Construct PK-8 Portion 2020 Bond Issue:

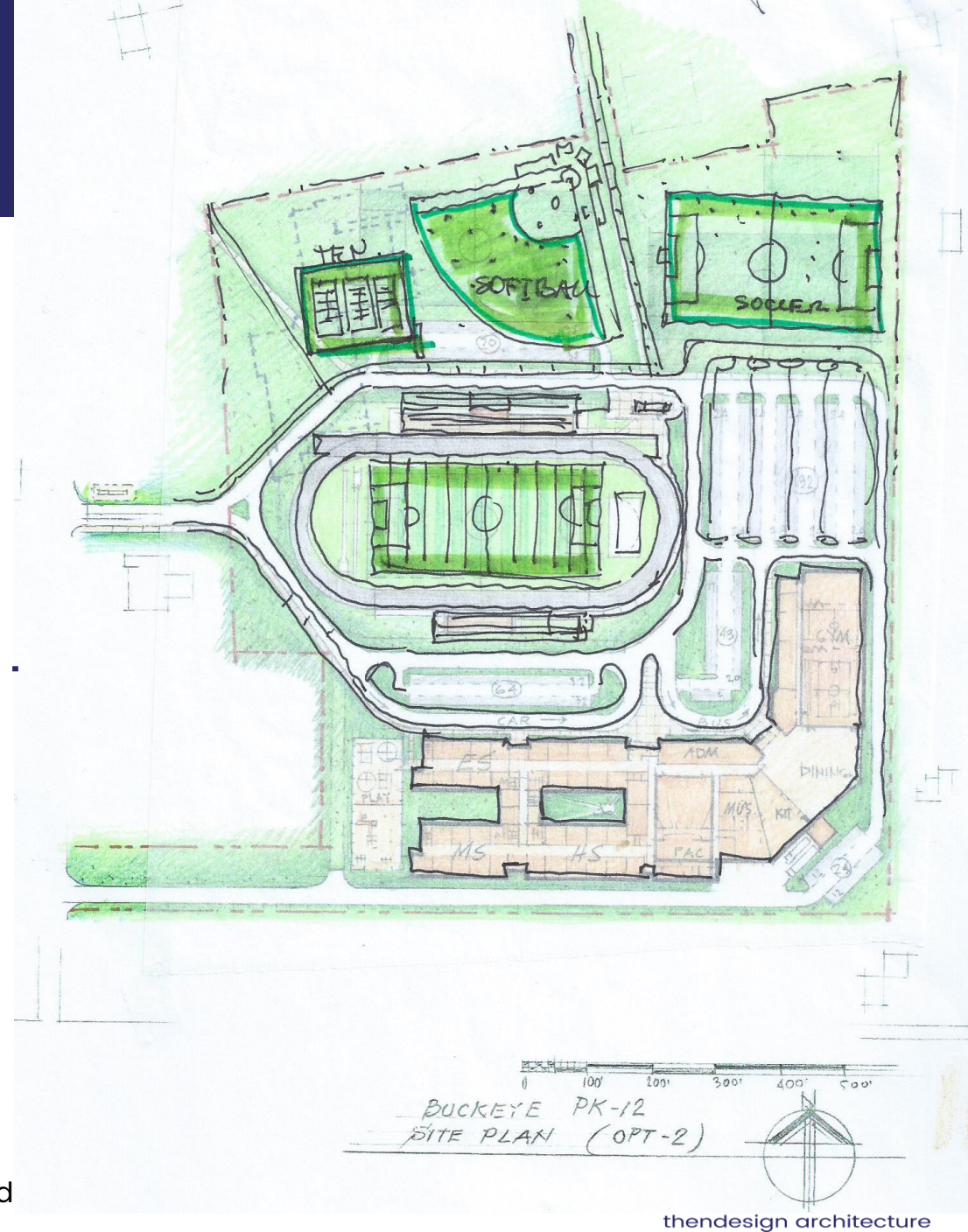
- Build PK-8 portion, Auditorium, Relocate Soccer Field (OFCC will require you build the student dining & kitchen for all of PK-12 students in Segment 1)
- Abate/Demo Braden, Ridgeview ES & Kingsville ES

**Segment 1 Scope Cost (2020):** \$51,295,889

Bond Issue under ELPP = \$51,295,889

Cost to Homeowner per month\* = \$30.02/month (10.29 mills)

Future Potential ELPP Credit for Segment 2 = \$30,354,678



Plan assumes that BOE would temporarily move to Edgewood until Phase 2 constructed

# BRADEN SITE – SEGMENTED PK-12 SEGMENT 2

## Segment 2 Scope Construct 9-12 Portion Future Bond

### Issue:

- Build 9-12 portion, BOE, Stadium, Softball & Tennis
- Abate/Demo Edgewood HS

**Segment 2 Scope Cost (Estimated 2025):** \$43,139,485

CFAP (Segment 2) Estimated State Share: \$18,715,381

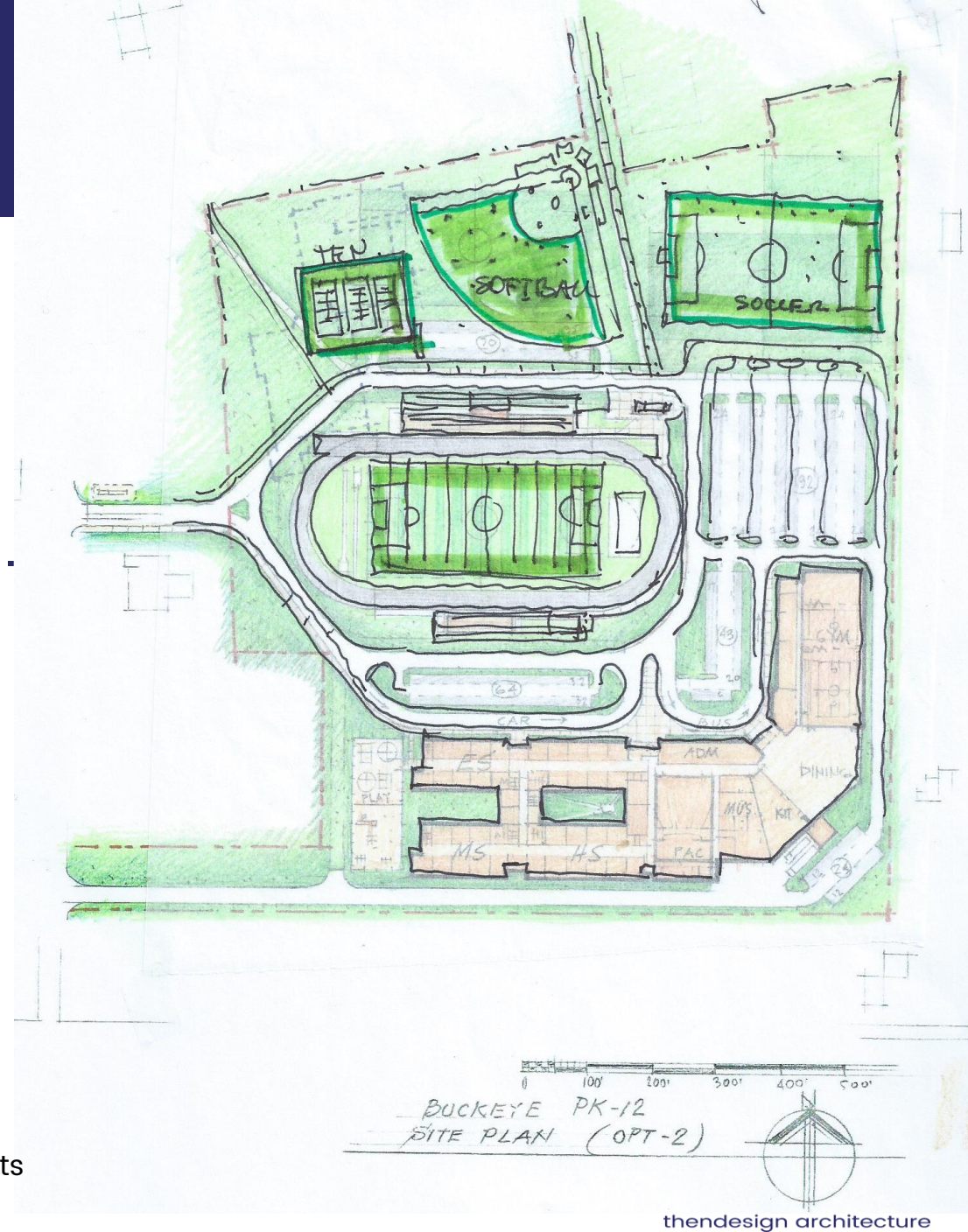
Anticipated ELPP Credit for Segment 1: \$30,354,678

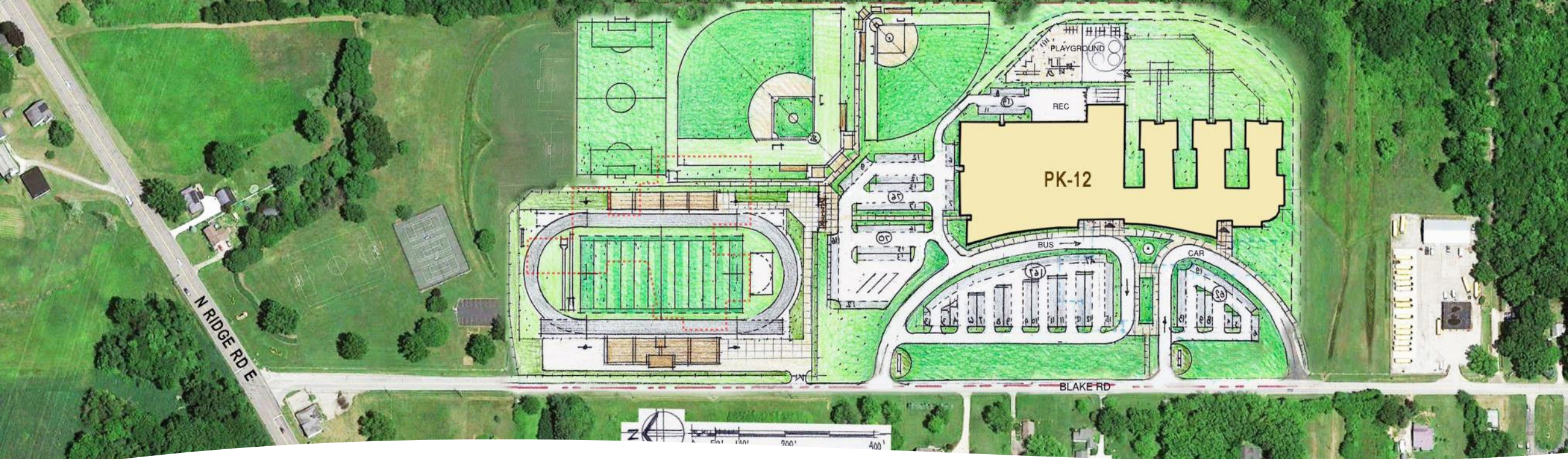
Unknowns/Variables for all plans (Braden, Edgewood, Kingsville:

- 1) When we will be eligible for CFAP Funding. Simulation assumes 2025.
- 2) How much will inflation be each year between now and when Segment 2 is implemented – simulation assumes 5% increase per year from 2020 to 2025
- 3) Actual Enrollments in 2025 can impact ELPP and CFAP state shares/credits

Potential Cost reductions:

- 1) Utilizing existing stadium or conducting select improvements
- 2) Utilizing existing fields at Edgewood
- 3) Utilizing auditorium & move BOE to Edgewood (will incur maintenance/operation costs for that building)





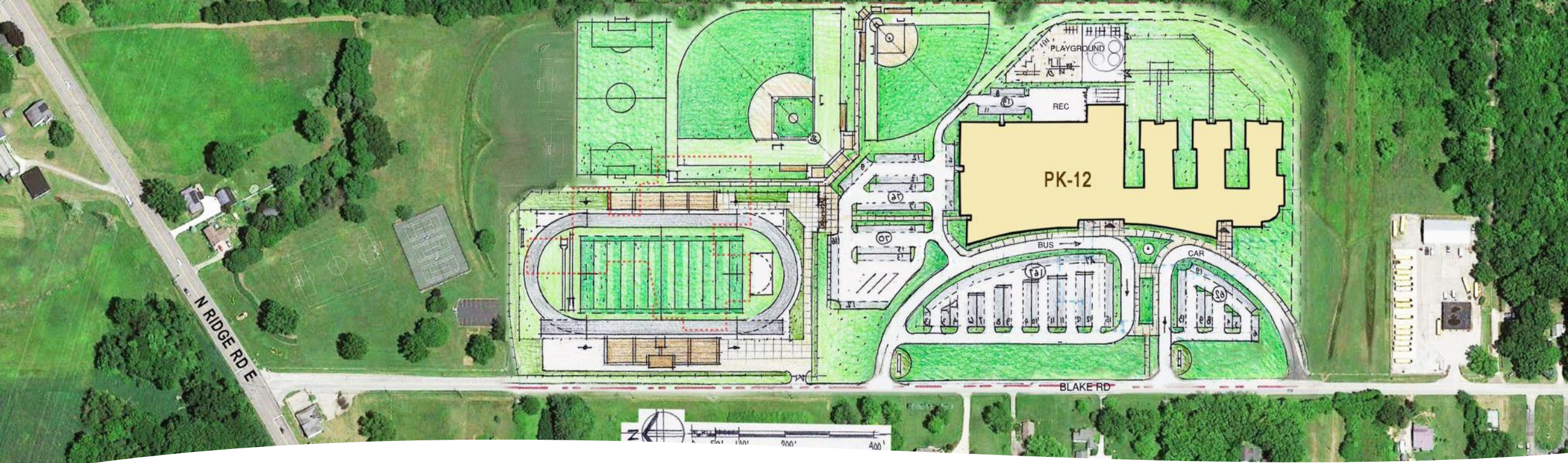
# EDGEWOOD SITE (49 Acres) – NEW PK-12

## **Full Scope:**

- Build New PK-12 at Edgewood Site
- Abate/Demo all existing school buildings
- Construct New Stadium, BOE, New 750 Seat Auditorium,
- Relocation of ballfields (note: all fields will fit on this site + no relocation of tennis courts is required)
- **Total Cost if implemented all scope in 2020:** \$88,349,992
- Bond Issue under ELPP = \$88,349,992
- Cost to Homeowner per month\* = \$50.64/month (17.36mills)
- Future Potential ELPP Credit = \$44,182,892

\*For home of \$100,000





# EDGEWOOD SITE SEGMENTED PK-12 – SEGMENT 1

## Segment 1 Scope Construct PK-8 Portion 2020 Bond Issue:

- Build PK-8 portion, Auditorium, Demo Existing Stadium: OFCC will require you build the student dining & kitchen for all of PK-12 students in Segment 1). Will be without Baseball & Softball fields on this site until Phase 2. Could build additional set at Braden (add \$1M)
- Abate/Demo Braden, Ridgeview ES & Kingsville ES

---

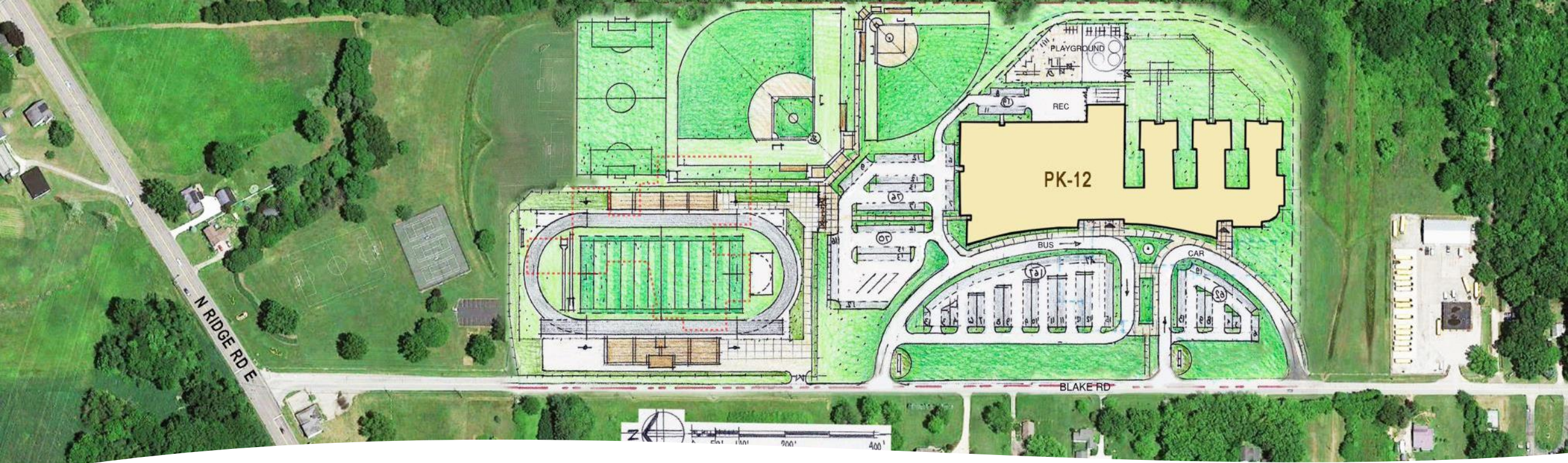
## Segment 1 Scope Cost (2020): \$52,610,889

Bond Issue under ELPP = \$52,610,889

Cost to Homeowner per month\* = \$30.75/month (10.54 mills)

Future Potential ELPP Credit for Segment 2 = \$30,354,678

\*For home of \$100,000



# EDGEWOOD SITE SEGMENTED PK-12 – SEGMENT 2

## **Segment 2 Scope Construct 9-12 Portion Future Bond Issue:**

- Build 9-12 portion, BOE, Stadium, Softball, Baseball & Soccer
- Abate/Demo Edgewood HS

-----

## **Segment 2 Scope Cost (Estimated 2025):** \$43,643,769

CFAP (Segment 2) Estimated State Share: \$18,715,381

Anticipated ELPP Credit for Segment 1: \$30,354,678

Same Unknowns/Variables as mentioned at Braden Scenario

\*For home of \$100,000

# POTENTIAL KINGSVILLE SITE – NEW PK-12

## **Full Scope:**

- Build New PK-12 at Potential Kingsville Site
- Abate/Demo all existing school buildings
- Construct New Stadium, BOE, New 750 Seat Auditorium, Relocation of ballfields & tennis courts

## **Total Cost if implemented**

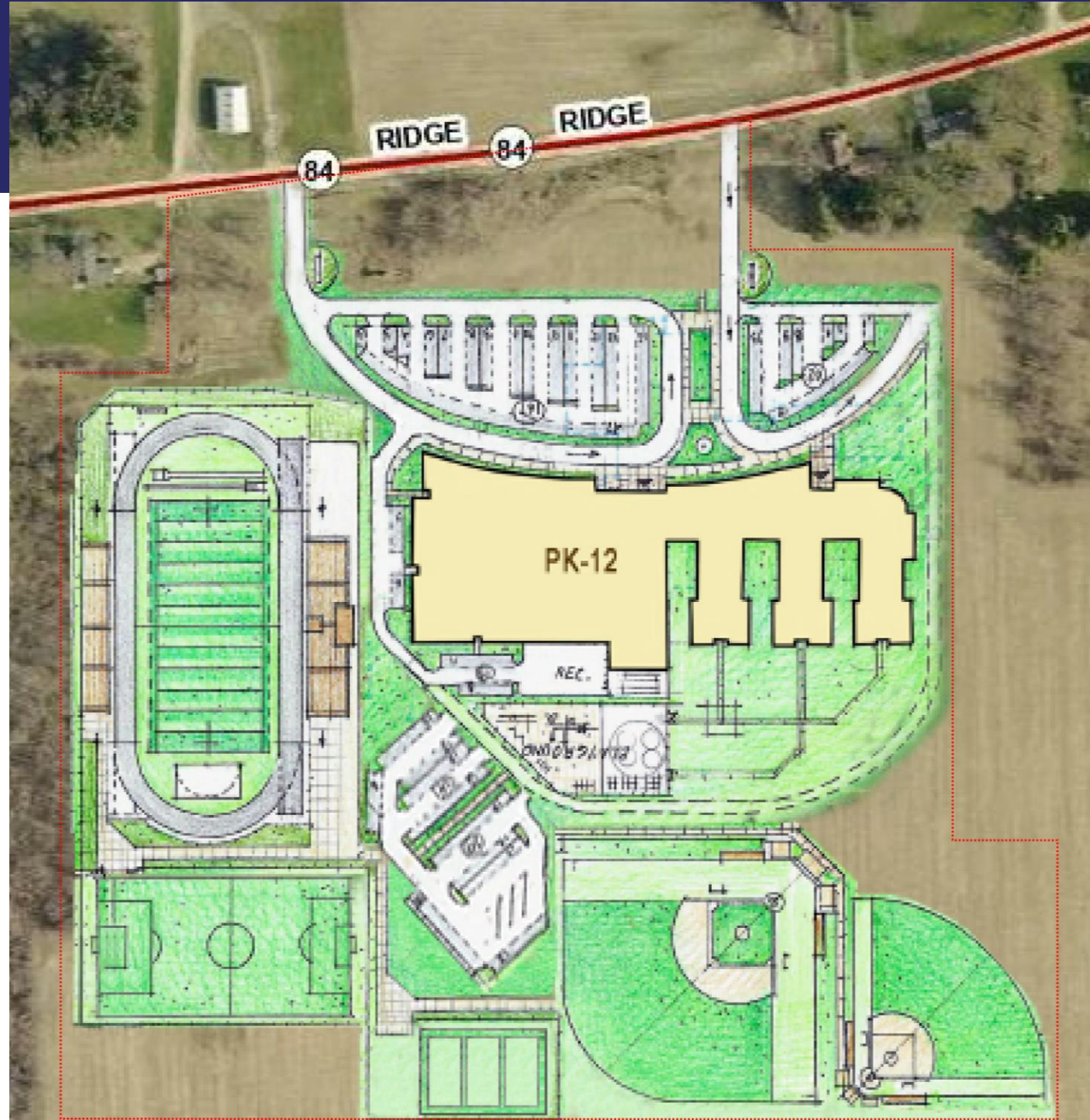
**all scope in 2020:** \$86,934,992

Bond Issue under ELPP = \$86,934,992

Cost to Homeowner per month\* =  
\$49.86/month (17.09 mills)

Future Potential ELPP Credit = \$44,182,892

\*For home of \$100,000



# POTENTIAL KINGSVILLE SITE – NEW PK-12 – SEGMENT 1

## Segment 1 Scope Construct PK-8 Portion 2020 Bond Issue:

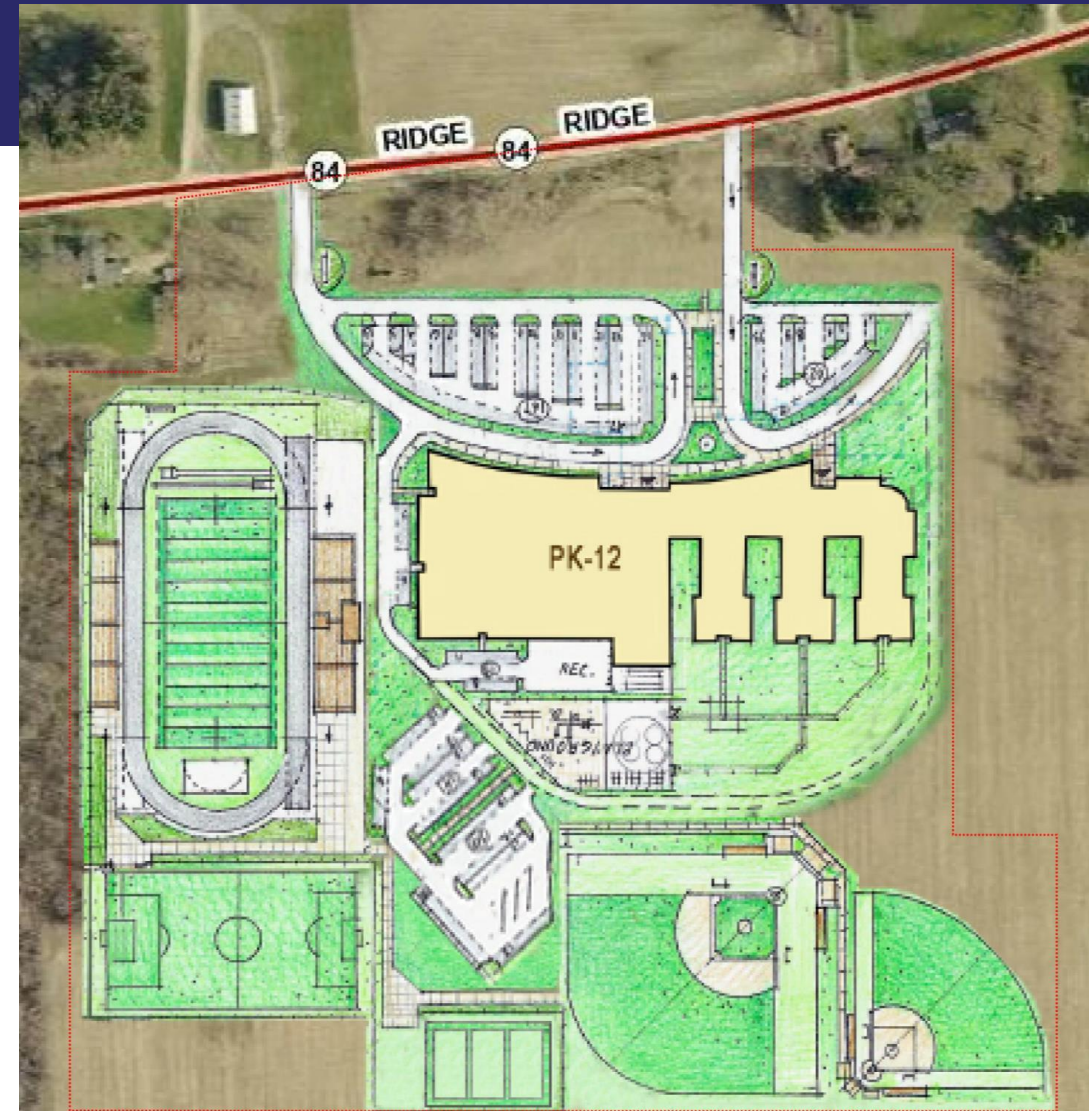
- Build PK-8 portion, Auditorium (OFCC will require you build the student dining & kitchen for all of PK-12 students in Segment 1)
- Abate/Demo Braden, Ridgeview ES & Kingsville ES

**Segment 1 Scope Cost (2020):** \$51,245,889

Bond Issue under ELPP = \$51,245,889

Cost to Homeowner per month\* = \$29.99/month (10.28 mills)

Future Potential ELPP Credit for Segment 2 = \$30,354,678



\*For home of \$100,000

# POTENTIAL KINGSVILLE SITE – NEW PK-12 – SEGMENT 2

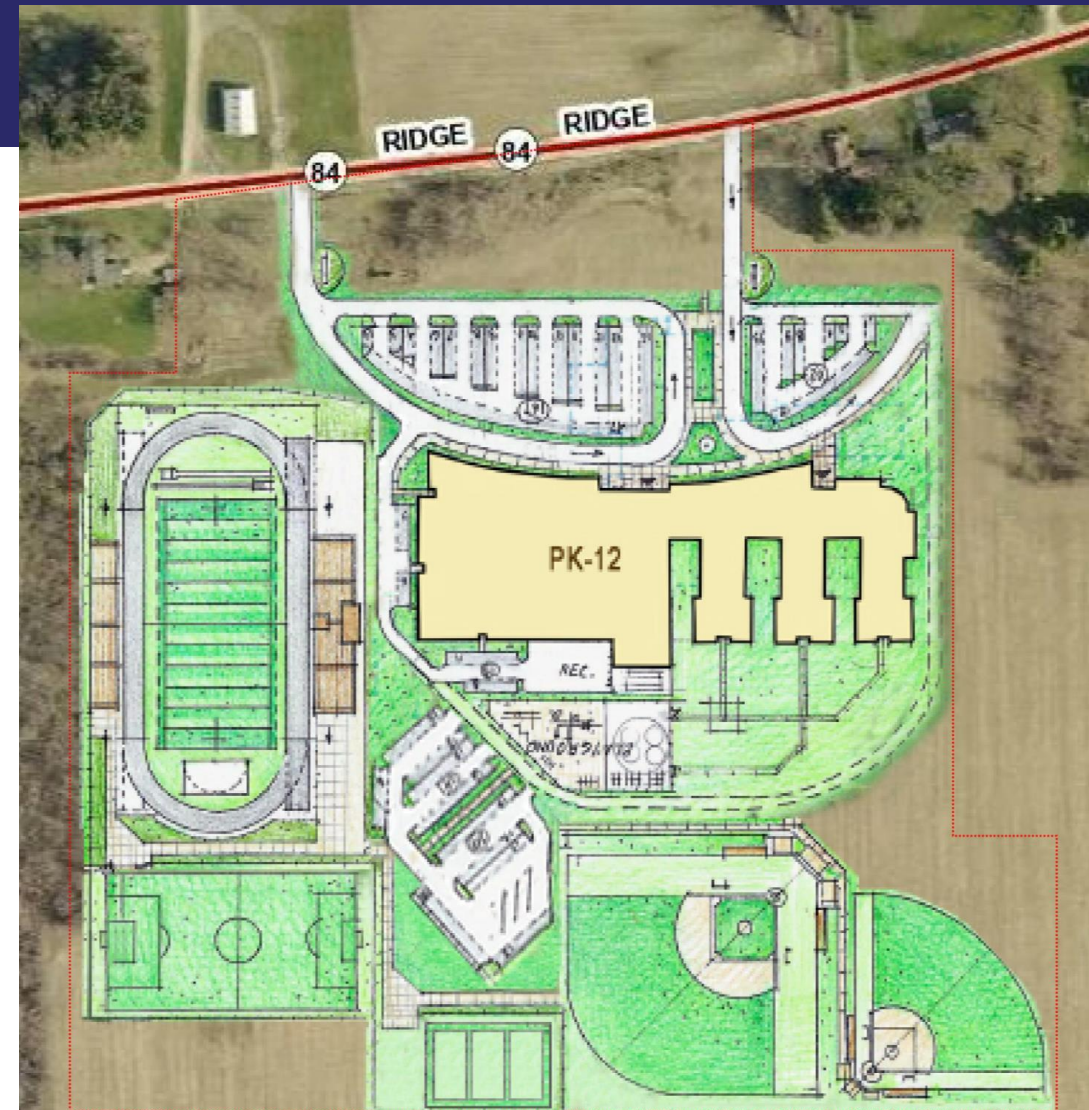
## Segment 2 Scope Construct 9-12 Portion Future Bond Issue:

- Build 9-12 portion, BOE, Stadium, Softball, Baseball & Tennis
- Abate/Demo Edgewood HS

Segment 2 Scope Cost (Estimated 2025): \$44,107,479

CFAP (Segment 2) Estimated State Share: \$18,715,381

Anticipated ELPP Credit for Segment 1: \$30,354,678



# Agenda

Updates

Master Plan Option Review  
- Segmenting

Schedule/Next steps

Questions



## Schedule & Next Steps

- Committee Consensus to Segment PK-12 – approving Hammond to move forward with creating OFCC segmented master plan for OFCC & BOE approval
- Site Selection component and final master plan needs to be determined by April 24th
- Note: COVID-19 implications to OFCC & State of Ohio Schedule, budget and project approvals are unknown at this time – we are in uncharted waters right now.